



**E & A CONSULTING GROUP, INC.**

*Engineering Answers*

10909 Mill Valley Rd, Ste 100 | Omaha, NE 68154  
402.895.4700  
eacg.com

Dear Homeowner,

The SID has contracted concrete work to be done on the streets in your SID. A contractor will be on site to do work which includes removing the existing concrete that is damaged and replacing it with new pavement.

Throughout the course of this project, there could be some minimal damage done to yards and or sprinkler systems. The contractor that is on site will be responsible for replacing any damaged sprinkler lines and/or heads. They will also be responsible for any yard damage. Once the new seed and mat and/or sod is installed, it will be the responsibility of the homeowner at each lot to water the new seed and mat and/or sod until it has re-established itself.

Before starting the work on site, each contractor must put in a call and have all the utilities in the area located. You might notice some areas in your yard that have been flagged and/or spray painted. This does not indicate the area in which they will be working. It is just to give them an idea of what kind of utilities are in the area that could possibly be hit while the contractor is on site working.

All work that is completed in public Right-of-Way and follow City of Omaha and Sarpy County specifications.

The work in your SID should not take longer than 30 days to complete. Please let me know if you have any questions or concerns on this at all.

Thank You,

A handwritten signature in blue ink, appearing to read 'TGifford', is written over a light blue horizontal line.

**Travis Gifford**

Construction Admin Tech

**Engineering Answers**...by transforming concepts into reality

E & A Consulting Group, Inc.

10909 Mill Valley Road, Suite 100 • Omaha, NE 68154

402.895.4700 (o) • 402.702.1767 (m)

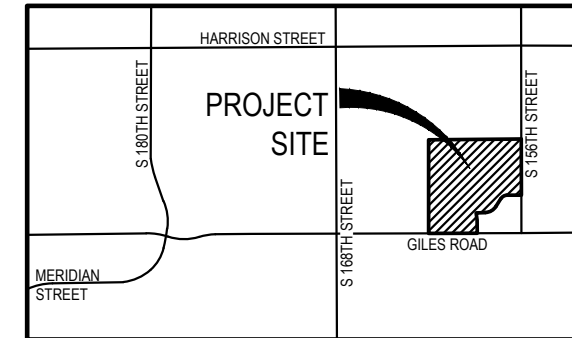
[tgifford@eacg.com](mailto:tgifford@eacg.com)



# SPRINGHILL

## 2024 STREET RECONSTRUCTION

SID NO. 233  
SARPY COUNTY, NEBRASKA



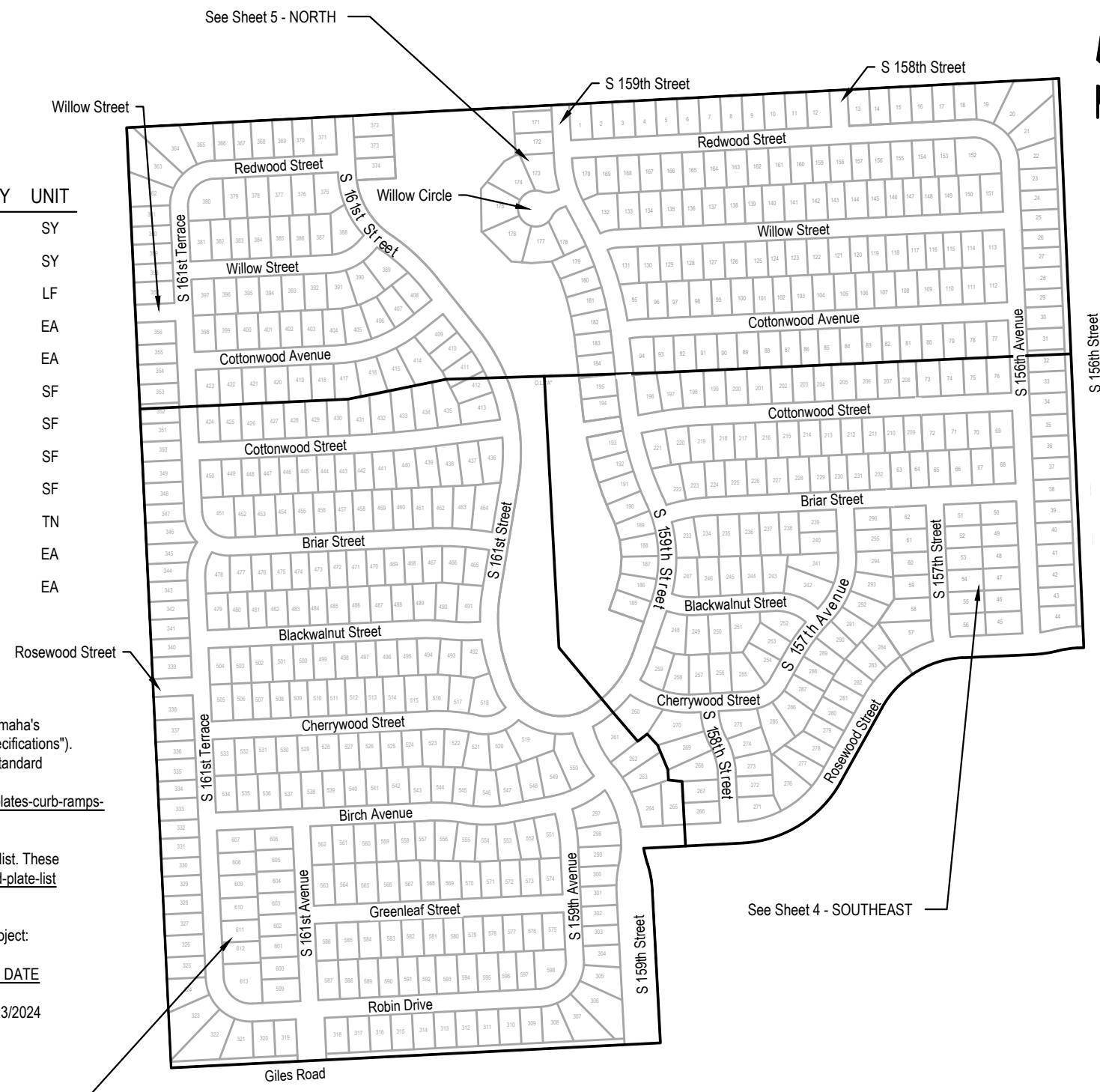
VICINITY MAP

### APPROXIMATE BID QUANTITIES

ITEM	DESCRIPTION	QUANTITY	UNIT
1	CONCRETE PAVEMENT REPAIR, LARGE AREA	974	SY
2	CONCRETE PAVEMENT REPAIR, SMALL AREA	978	SY
3	FULL DEPTH SAW CUT EXISTING PAVEMENT	2,915	LF
4	ADJUST WATER VALVE TO GRADE	4	EA
5	ADJUST MANHOLE TO GRADE	7	EA
6	REMOVE AND REPLACE PCC TRAIL	270	SF
7	REMOVE AND REPLACE PCC SIDEWALK	493	SF
8	REMOVE AND REPLACE PCC CURB RAMP	251	SF
9	CONSTRUCT DETECTABLE WARNING PANEL (7 locations)	64	SF
10	REMOVE AND REPLACE FAULTY SUBGRADE	25	TN
11	ADJUST SPRINKLER (AS NEEDED)	8	EA
12	REMOVE AND RELOCATE SIGN	1	EA

### INDEX OF SHEETS

SHEET NO.	DESCRIPTION
1	COVER
2	DETAILS
3	SOUTHWEST
4	SOUTHEAST
5	NORTH
6	TOTAL QUANTITIES
7	COMPOSITE MAP



#### NOTE TO BIDDERS

- All project procedures, materials, bonds and reserves shall conform to the City of Omaha's Standard Specifications for Public Works Construction, 2020 Edition ("Standard Specifications"). It is the responsibility of the CONTRACTOR to be familiar with the contents of the Standard Specifications. The Standard Specifications can be found at: <https://publicworks.cityofomaha.org/contractors-consultants2/contractors/standard-plates-curb-ramps-and-specifications>
- References to "Standard Plates" refers to the City of Omaha's 2020 Standard Plate list. These Standard Plates can be found at: <https://publicworks.cityofomaha.org/2020-standard-plate-list>

The CONTRACTOR is referred to the following Standard Plates for use on this project:

PLATE NO.	DESCRIPTION	REVISION DATE
1002-02-01, 03, 04	Pavement Repair	02/13/2024



#### APPLICANT

SID # 233  
Joel Park, Chairman  
11440 West Center Road, Ste. C  
Omaha, NE 68144  
P: 402.334.0700  
F: 402.334.0815  
mjohnson@fdjalaw.com

#### DESIGNER

E & A Consulting Group, Inc  
Teresa Wooten, P.E.  
10909 Mill Valley Road, Suite 100  
Omaha, NE 68154  
P: 402.895.4700  
F: 402.895.3599  
twooten@eacg.com

#### INSPECTOR

E & A Consulting Group, Inc  
Randall L. Pierce, P.E.  
10909 Mill Valley Road, Suite 100  
Omaha, NE 68154  
P: 402.895.4700  
F: 402.895.3599  
rpierce@eacg.com

#### CONTRACTOR

**E & A CONSULTING GROUP, INC.**  
Engineering • Planning • Environmental & Field Services

10909 Mill Valley Road, Suite 100 • Omaha, NE 68154  
Phone: 402.895.4700 • Fax: 402.895.3599  
www.eacg.com  
State of NE Certificate of Authorization #CA0008

**SPRINGHILL**  
**2024 STREET**  
**RECONSTRUCTION**

SID 233  
SARPY COUNTY, NEBRASKA

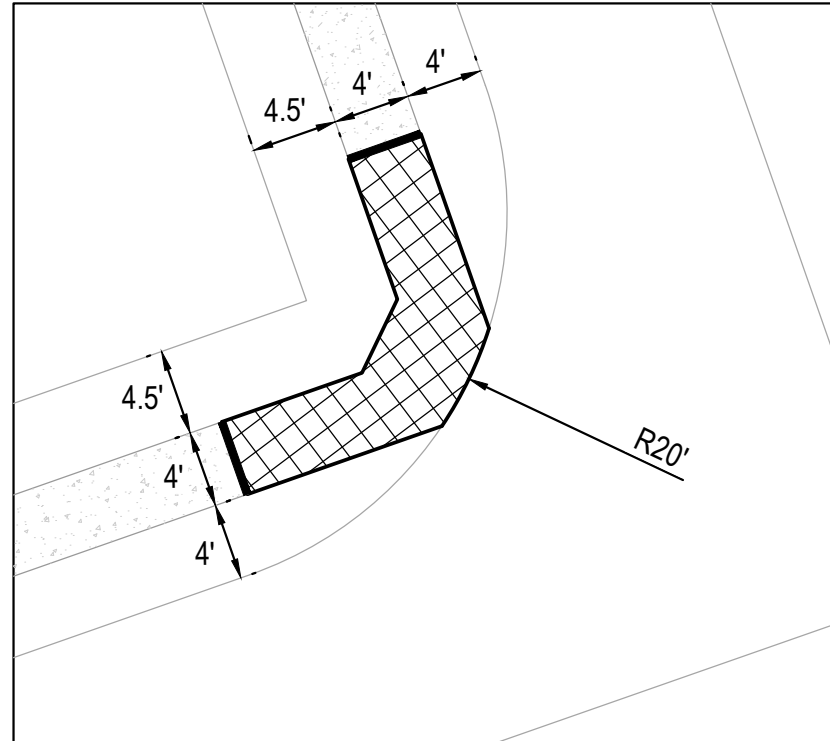
**COVER**

Proj No: P2001152/02  
Date: 04/23/2024  
Designed By: TAMM  
Drawn By: JMB  
Scale: 1" = 400'  
Sheet: 1 of 7



Revisions

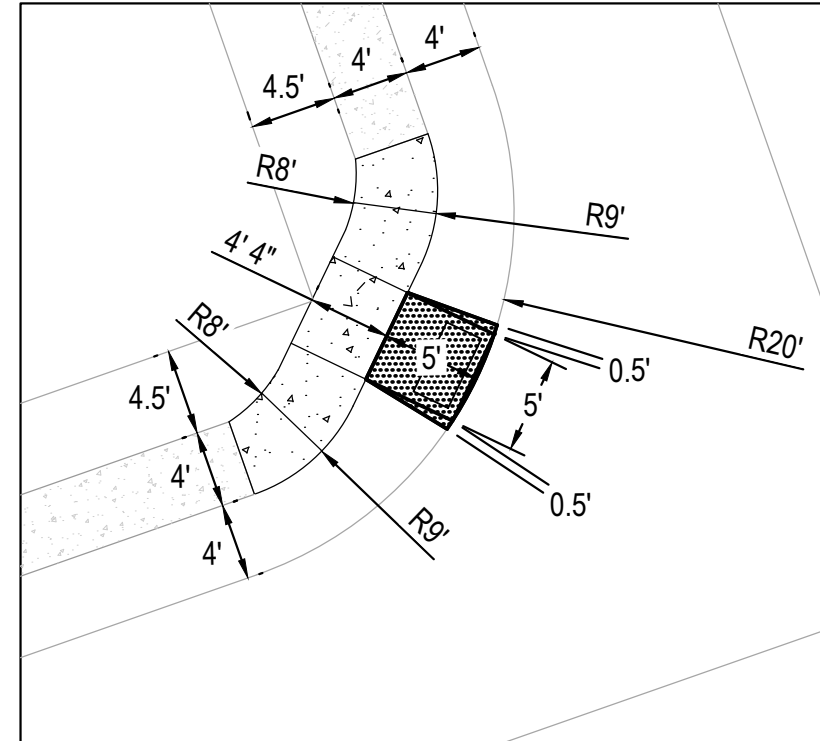
Date	Description

4/23/2024 3:25 PM K:\Projects\2001\152\p22\Engineering\CAD Files\Paving\Springhill 2024 Street Reconstruction-000.dwg  
Jessica Brown

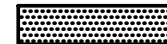
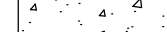


**TYPICAL CURB RAMP AND SIDEWALK REMOVAL**  
 SCALE 1" = 10'

-  CONCRETE REMOVAL PER LOCATION = ± 99 FT<sup>2</sup>
-  FULL DEPTH SAWCUT PER LOCATION = 8 L.F.



**TYPICAL CURB RAMP AND SIDEWALK CONSTRUCTION**  
 SCALE 1" = 10'

-  CONSTRUCT CURB RAMP PER LOCATION = ± 30 FT<sup>2</sup>
-  CONSTRUCT SIDEWALK PER LOCATION = ± 80 FT<sup>2</sup>



Revisions	Date	Description
1	04/23/2024	TAM
2	JUNE	JMB

Proj No: P2001152102  
 Date: 04/23/2024  
 Designed By: TAM  
 Drawn By: JMB  
 Scale: 1" = 10'  
 Sheet: 2 of 7

**DETAILS**

**SPRINGHILL  
 2024 STREET  
 RECONSTRUCTION**  
 SID 233  
 SAPPY COUNTY, NEBRASKA



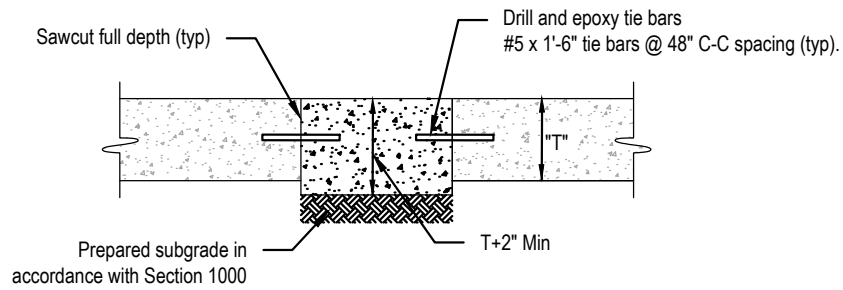
**E & A CONSULTING GROUP, INC.**  
 Engineering • Planning • Environmental & Field Services

10889 Mill Valley Road, Suite 100 • Omaha, NE 68154  
 Phone: 402.265.4700 • Fax: 402.265.3599  
 www.eaeg.com  
 State of NE Certificate of Authorization #CA0008



2024 STREET RECONSTRUCTION									
AREA NO.	NO. POURS	SAW CUT L.F.	CURB L.F.	WIDTH	X	LENGTH	LARGE AREA EST S.Y.	SMALL AREA EST S.Y.	NOTES
1	2	88	15	18.0	x	10.0		20.0	
				8.0	x	24.0		21.3	
2	1	41	15	12.8	x	15.0		21.3	
30	1	26	2	7.0	x	7.0		5.4	
31	1	52	26	12.8	x	26.0		36.8	
34	2	71	52	25.5	x	26.0	73.7		
35	1	41	15	12.8	x	15.0		21.3	
36	1	98	6	12.8	x	26.0		36.8	
37	1	74	12	25.0	x	13.0		36.1	
39	2	74	4	12.8	x	26.0		36.8	
40	2	112	18	25.0	x	13.0	36.1		Adjust Manhole
				25.0	x	18.0	50.0		
41	2	60	8	12.8	x	26.0		36.8	
42	2	59	10	25.5	x	14.0		39.7	
43	1	87	21	12.8	x	41.5		58.8	

2024 STREET RECONSTRUCTION						
AREA NO.	TYPE	APPROX. DIMEN.		EST S.F.	NOTES	
A	Curb Ramp	5.0	x 5.5	27.5	ADA Plate - Cast Iron	
B	Sidewalk	4.0	x 20.0	80.0	Adjust Manhole, Adjust Water Valve, Adjust Sprinkler (as needed)	
G	Curb Ramp	5.0	x 5.5	27.5	ADA Plate - Cast Iron	
H	Sidewalk	4.0	x 20.0	80.0	Adjust Water Valve, Adjust Sprinkler (as needed)	
I	Curb Ramp	5.0	x 5.5	27.5	ADA Plate - Cast Iron	
J	Sidewalk	4.0	x 20.0	80.0	Adjust Manhole, Adjust Sprinkler (as needed)	
K	Curb Ramp	5.0	x 5.5	27.5	ADA Plate - Cast Iron	
L	Sidewalk	4.0	x 20.0	80.0	Remove and Relocate Sign, Adjust Water Valve, Adjust Sprinkler (as needed)	



**SMALL AREA CONCRETE PAVEMENT REPAIR DETAIL**  
NOT TO SCALE



**E & A CONSULTING GROUP, INC.**  
Engineering • Planning • Environmental & Field Services

**E & A CONSULTING GROUP, INC.**  
Engineering Answers

**SPRINGHILL 2024 STREET RECONSTRUCTION**  
SID 233  
SARPY COUNTY, NEBRASKA

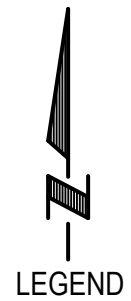
**SOUTHWEST**

Proj No: P2001152-022  
Date: 04/23/2024  
Designed By: TMM  
Drawn By: JMB  
Scale: 1" = 30'  
Sheet: 3 of 7

Revisions  
Date Description

4/23/2024 3:26 PM  
K:\Projects\2001152\p22\Engineering\CAD Files\Paving\Springhill 2024 Street Reconstruction-000.dwg

Jessica Brown



LEGEND



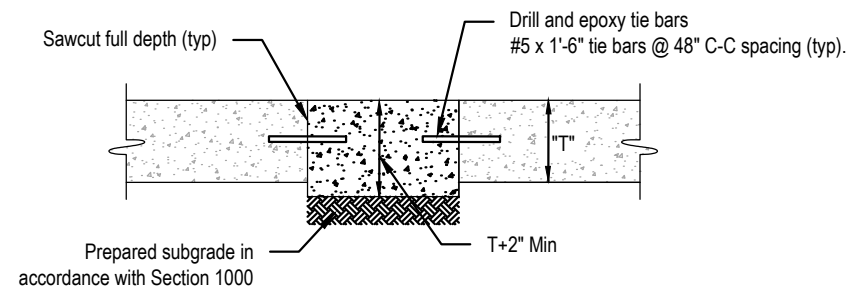
Trail

**2024 STREET RECONSTRUCTION**

AREA NO.	NO. POURS	SAW CUT L.F.	CURB L.F.	WIDTH	X	LENGTH	LARGE AREA EST S.Y.	SMALL AREA EST S.Y.	NOTES
3	2	64	14	14.3	x	25.0		39.6	
4	2	73		14.5	x	22.0		35.4	
5	2	76		13.8	x	24.0		36.7	
6	1	62	11	10.5	x	26.0		30.3	
7	2	81		10.5	x	30.0		35.0	Adjust Manhole
8	2	67	34	16.5	x	34.0	62.3		Adjust Manhole
9	1	15	2	3.5	x	11.0		4.3	Curb Inlet Throat
10	1	53	27	12.8	x	27.0		38.3	
11	2	98	24	12.8	x	36.0		51.0	
12	2	92	6	12.8	x	36.0		51.0	
13	1	15	2	3.5	x	11.0		4.3	Curb Inlet Throat
14	1	53	21	12.8	x	24.0		34.0	
15	1	124	21	12.8	x	60.0	85.0		
16	2	90	38	25.5	x	25.0	70.8		
				12.8	x	26.0	36.8		
17	2	99	48	25.5	x	24.0	68.0		
				12.8	x	36.0	51.0		
18	2	103	30	25.5	x	15.0	42.5		
				12.8	x	26.0	36.8		

**2024 STREET RECONSTRUCTION**

AREA NO.	TYPE	APPROX. DIMEN.	EST S.F.	NOTES
C	Curb Ramp	5.3 x 15.5	81.4	ADA Plate - Cast Iron (2' x 8')
D	6" Trail	6.0 x 45.0	270.0	Adjust Sprinkler (as needed)



**SMALL AREA CONCRETE PAVEMENT REPAIR DETAIL**  
 NOT TO SCALE



**E & A CONSULTING GROUP, INC.**  
 Engineering • Planning • Environmental & Field Services  
 10809 Mill Valley Road, Suite 100 • Omaha, NE 68154  
 Phone: 402.865.4700 • Fax: 402.865.3599  
 www.eagroup.com  
 State of NE Certificate of Authorization #CA0008

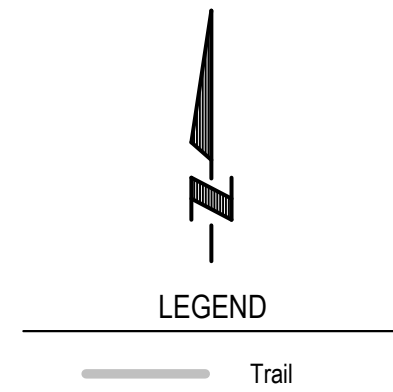
**E & A CONSULTING GROUP, INC.**  
 Engineering Answers

**SPRINGHILL**  
**2024 STREET**  
**RECONSTRUCTION**  
 SID 233  
 SAPPY COUNTY, NEBRASKA

**SOUTHEAST**

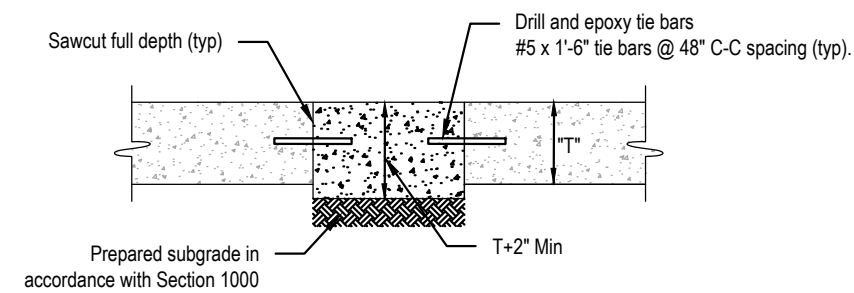
Revisions  
 Date Description  
 4/23/2024  
 4/23/2024

Proj No: P2001152022  
 Date: 04/23/2024  
 Design By: TMM  
 Drawn By: JMB  
 Scale: 1" = 300'  
 Sheet: 4 of 7



2024 STREET RECONSTRUCTION									
AREA NO.	NO. POURS	SAW CUT L.F.	CURB L.F.	WIDTH	X	LENGTH	LARGE AREA EST S.Y.	SMALL AREA EST S.Y.	NOTES
19	2	51		25.5	x	26.0	73.7		Adjust Manhole
20	1	86	60	12.8	x	60.0	85.0		
21	1	54	2	12.0	x	16.0		21.3	
22	2	51	30	25.5	x	15.0		42.5	
23	1	73	47	12.8	x	47.0	66.6		
24	2	51	30	25.5	x	25.5	72.3		Curb Inlet Throat
25	1	41	16	12.8	x	15.5		22.0	
26	1	42		10.0	x	12.0		13.3	
27	1	71	45	12.8	x	45.0	63.8		
28	1	41	15	12.8	x	15.0		21.3	
29	2	60		10.0	x	20.0		22.2	
32	1	50	24	12.8	x	24.0		34.0	
33	1	86	12	12.8	x	36.0		51.0	
38	1	53	14	12.8	x	14.0		19.8	

2024 STREET RECONSTRUCTION					
AREA NO.	TYPE	APPROX. DIMEN.		EST S.F.	NOTES
E	Curb Ramp	5.0	x 5.5	27.5	ADA Plate - Cast Iron, Adjust Sprinkler (as needed)
F	Sidewalk	4.0	x 12.0	48.0	Adjust Manhole, Adjust Sprinkler (as needed)
M	Curb Ramp	5.0	x 6.5	32.5	ADA Plate - Cast Iron
N	Sidewalk	5.0	x 25.0	125.0	Adjust Water Valve, Adjust Sprinkler (as needed)



**SMALL AREA CONCRETE PAVEMENT REPAIR DETAIL**  
 NOT TO SCALE



**E & A CONSULTING GROUP, INC.**  
 Engineering • Planning • Environmental & Field Services  
 10809 Mill Valley Road, Suite 100 • Omaha, NE 68154  
 Phone: 402.685.4700 • Fax: 402.685.3599  
 www.eagroup.com  
 State of NE Certificate of Authorization #CA0008

**E & A CONSULTING GROUP, INC.**  
 Engineering Answers

**SPRINGHILL 2024 STREET RECONSTRUCTION**  
 SID 233  
 SAPPY COUNTY, NEBRASKA

**NORTH**

Revisions	Date	Description
1	04/23/2024	ISSUED FOR PERMITS

Proj No: P2001152/02  
 Date: 04/23/2024  
 Designer: TAMM  
 Drawn By: JMB  
 Scale: 1" = 30'  
 Sheet: 5 of 7



2024 STREET RECONSTRUCTION									
AREA NO.	NO. POURS	SAW CUT L.F.	CURB L.F.	WIDTH	X	LENGTH	LARGE AREA EST S.Y.	SMALL AREA EST S.Y.	NOTES
1	2	88	15	18.0	x	10.0		20.0	
				8.0	x	24.0		21.3	
2	1	41	15	12.8	x	15.0		21.3	
3	2	64	14	14.3	x	25.0		39.6	
4	2	73		14.5	x	22.0		35.4	
5	2	76		13.8	x	24.0		36.7	
6	1	62	11	10.5	x	26.0		30.3	
7	2	81		10.5	x	30.0		35.0	Adjust Manhole
8	2	67	34	16.5	x	34.0	62.3		Adjust Manhole
9	1	15	2	3.5	x	11.0		4.3	Curb Inlet Throat
10	1	53	27	12.8	x	27.0		38.3	
11	2	98	24	12.8	x	36.0		51.0	
12	2	92	6	12.8	x	36.0		51.0	
13	1	15	2	3.5	x	11.0		4.3	Curb Inlet Throat
14	1	53	21	12.8	x	24.0		34.0	
15	1	124	21	12.8	x	60.0	85.0		
16	2	90	38	25.5	x	25.0	70.8		
				12.8	x	26.0	36.8		
17	2	99	48	25.5	x	24.0	68.0		
				12.8	x	36.0	51.0		
18	2	103	30	25.5	x	15.0	42.5		
				12.8	x	26.0	36.8		
19	2	51		25.5	x	26.0	73.7		Adjust Manhole
20	1	86	60	12.8	x	60.0	85.0		
21	1	54	2	12.0	x	16.0		21.3	
22	2	51	30	25.5	x	15.0		42.5	
23	1	73	47	12.8	x	47.0	66.6		
24	2	51	30	25.5	x	25.5	72.3		Curb Inlet Throat
25	1	41	16	12.8	x	15.5		22.0	
26	1	42		10.0	x	12.0		13.3	
27	1	71	45	12.8	x	45.0	63.8		
28	1	41	15	12.8	x	15.0		21.3	
29	2	60		10.0	x	20.0		22.2	
30	1	26	2	7.0	x	7.0		5.4	
31	1	52	26	12.8	x	26.0		36.8	
32	1	50	24	12.8	x	24.0		34.0	

2024 STREET RECONSTRUCTION									
AREA NO.	NO. POURS	SAW CUT L.F.	CURB L.F.	WIDTH	X	LENGTH	LARGE AREA EST S.Y.	SMALL AREA EST S.Y.	NOTES
33	1	86	12	12.8	x	36.0		51.0	
34	2	71	52	25.5	x	26.0	73.7		
35	1	41	15	12.8	x	15.0		21.3	
36	1	98	6	12.8	x	26.0		36.8	
37	1	74	12	25.0	x	13.0		36.1	
38	1	53	14	12.8	x	14.0		19.8	
39	2	74	4	12.8	x	26.0		36.8	
40	2	112	18	25.0	x	13.0	36.1		Adjust Manhole
				25.0	x	18.0	50.0		
41	2	60	8	12.8	x	26.0		36.8	
42	2	59	10	25.5	x	14.0		39.7	
43	1	87	21	12.8	x	41.5		58.8	

2024 STREET RECONSTRUCTION						
AREA NO.	TYPE	APPROX. DIMEN.			EST S.F.	NOTES
A	Curb Ramp	5.0	x	5.5	27.5	ADA Plate - Cast Iron
B	Sidewalk	4.0	x	20.0	80.0	Adjust Manhole, Adjust Water Valve, Adjust Sprinkler (as needed)
C	Curb Ramp	5.3	x	15.5	81.4	ADA Plate - Cast Iron (2' x 8')
D	6" Trail	6.0	x	45.0	270.0	Adjust Sprinkler (as needed)
E	Curb Ramp	5.0	x	5.5	27.5	ADA Plate - Cast Iron, Adjust Sprinkler (as needed)
F	Sidewalk	4.0	x	12.0	48.0	Adjust Manhole, Adjust Sprinkler (as needed)
G	Curb Ramp	5.0	x	5.5	27.5	ADA Plate - Cast Iron
H	Sidewalk	4.0	x	20.0	80.0	Adjust Water Valve, Adjust Sprinkler (as needed)
I	Curb Ramp	5.0	x	5.5	27.5	ADA Plate - Cast Iron
J	Sidewalk	4.0	x	20.0	80.0	Adjust Manhole, Adjust Sprinkler (as needed)
K	Curb Ramp	5.0	x	5.5	27.5	ADA Plate - Cast Iron
L	Sidewalk	4.0	x	20.0	80.0	Remove and Relocate Sign, Adjust Water Valve, Adjust Sprinkler (as needed)
M	Curb Ramp	5.0	x	6.5	32.5	ADA Plate - Cast Iron
N	Sidewalk	5.0	x	25.0	125.0	Adjust Water Valve, Adjust Sprinkler (as needed)



**E & A CONSULTING GROUP, INC.**  
Engineering • Planning • Environmental & Field Services

1088 Mill Valley Road, Suite 100 • Omaha, NE 68154  
Phone: 402.665.4700 • Fax: 402.665.3599  
www.eag.com  
State of NE Certificate of Authorization #CA008

**E & A CONSULTING GROUP, INC.**  
Engineering Answers

**SPRINGHILL  
2024 STREET  
RECONSTRUCTION**  
SID 233  
SARPY COUNTY, NEBRASKA

**TOTAL QUANTITIES**

Proj No: P200115202

Date: 04/23/2024

Designed By: TMM

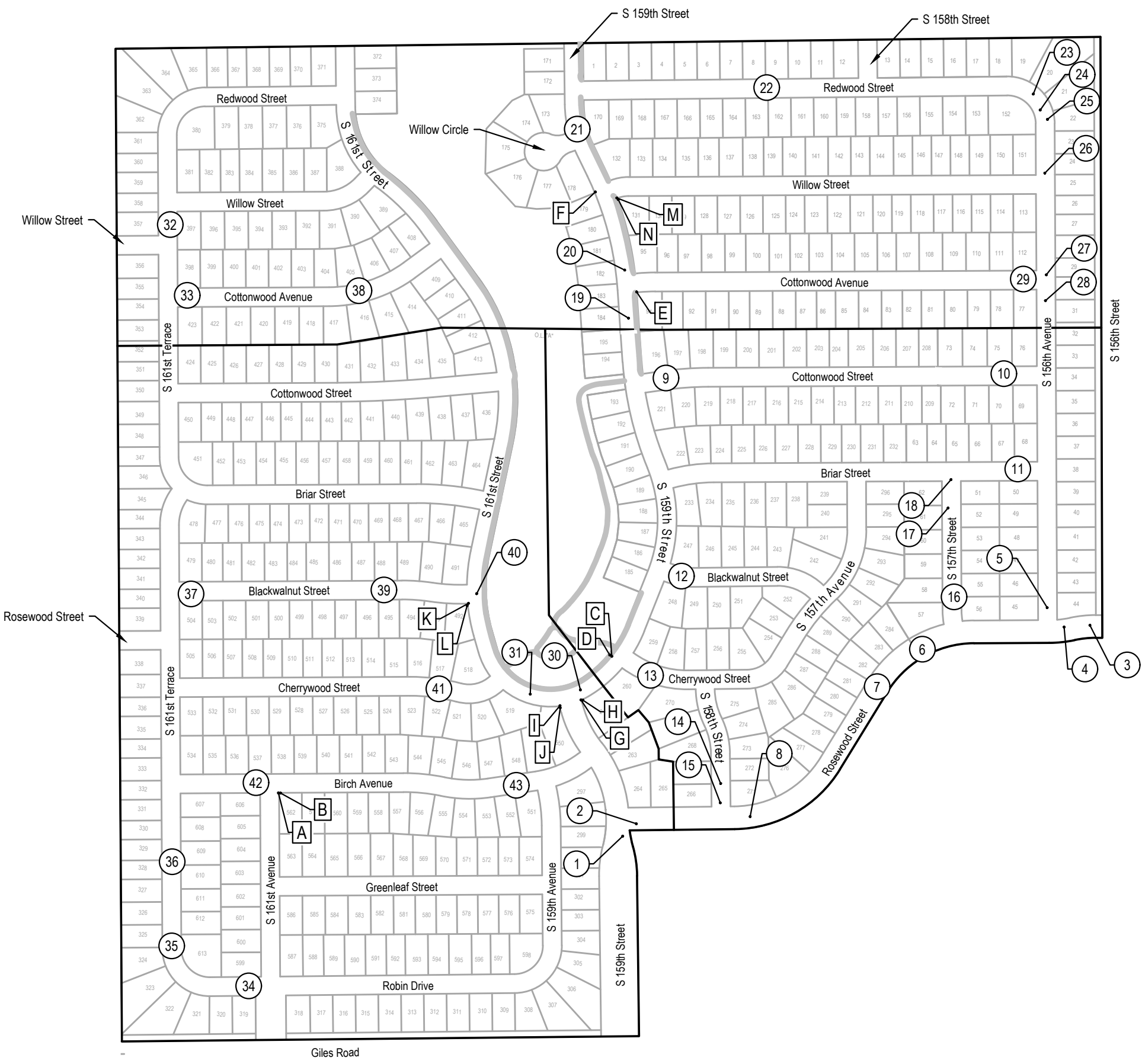
Drawn By: JMB

Scale: N/A

Sheet: 6 of 7

Revisions

No.	Date	Description
1		



LEGEND



Trail



**E & A CONSULTING GROUP, INC.**  
 Engineering • Planning • Environmental & Field Services



**SPRINGHILL  
 2024 STREET  
 RECONSTRUCTION**  
 SID 233  
 SAPPY COUNTY, NEBRASKA

**COMPOSITE MAP**

Revisions	Date	Description
1	04/23/2024	TAMW
2	JUNE	JUNE
3	F = 30'	
4	7 of 7	